



SaveCows[®].com

Dedicated to Animal Well-Being. Fostering Hoof Health.



COMFORT HOOF CARE Inc.



TRAKRITE[®]

GLOBAL LLC



Sure Step Consulting

INTERNATIONAL LLC



DAIRYLAND

HOOF CARE INSTITUTE



SYNERGY

METALWORKS LLC





SaveCows[®].com

Simply stated, this is our daily focus and business goal. We contribute to the health of dairy cows around the world by being the leading resource for safe equipment design, hoof health research, hoof care training, product development and MmmooOgle Accu-trim[®] analysis software. Our experienced team will put you on a successful path that yields results.



Serving the international dairy community with innovative equipment, leading-edge products and modern technology for over 30 years.



Offering flooring solutions to create safe and secure walking surfaces that dairy cows can trust.



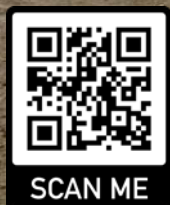
Providing manufacturing and assembly services from design to delivery. Our products stand the test of time in over 70 countries.



Bringing decades of experience by teaching hoof care techniques based on scientific research, enhancing the life and productivity of dairy cows around the globe.



Developing strategies to improve hoof health, boost productivity and increase profit margins by putting the cow first.



SCAN ME



Dedicated to Animal Well-Being **Fostering** Hoof Health

We check ALL the boxes:

- ☒ Education & Consulting
- ☒ Hoof Health Evaluation
- ☒ Data Analysis
- ☒ Action Plans
- ☒ Proper Hoof Trimming
 - ☒ Training
 - ☒ Trustworthy Equipment
 - ☒ Effective Products
- ☒ Stockmanship
- ☒ Facility Design
 - ☒ Flooring
 - ☒ Cow Comfort



The **RESOURCE** for hoof health equipment and technology



- Featured on all of our Comfort Chutes
- Designed for accurate and precise hoof care
- Optimal and safe trimming position
- Handle cows with ease



Heel to toe view



Easy accessibility



Follows cow's natural leg stroke

Products You Can Trust



BOND365®



Accu-bloc®



Accu-sole®

Accu-bond®



COMFORT CHUTES *H★Series*





- Hydraulic synchronized controls for convenient and reliable performance
- Easy for the cow — effortless loading, comfortable position, stress-free procedures
- Ergonomic work area reduces steps and saves time
- Meeting the needs of various breeds and ages of cattle
- Electrical system customized for you
- Options for stationary and portable use
- Model HS - Stationary Chute for on-farm use
- Model HT - Chute & Trailer package for portable use



See <http://comforthoofcare.com/h-series/> for instructional video.

COMFORT CHUTES

A★Series



featuring
Accu-trim
LEG RESTRAINT

- Comfortable position allows for stress-free trimming for the cow and technician
- Economical investment for mid-volume trimming stations
- Safe and easy operation — automated design equipped with dependable features
- Meeting the needs of various breeds and ages of cattle
- Electrical system customized for you
- Options for stationary and portable use
- Model AS — Stationary chute for on-farm use
- Model AT — Chute and trailer package for portable use



See <http://www.comforthoofcare.com/comfort-chutes/a-series/> for instructional video.

COMFORT CHUTES

M★Series



Model MS chute (above)



- Versatile design allows for cost effective hoof care on your dairy
- Removable side bars allow access to the cow for veterinary care
- Cow-friendly, open design for easy loading and comfort
- Trim with confidence using the spring-tension safety cranks
- Meeting the needs of various breeds and ages of cattle
- Options: Lead-in station, Trailer

featuring
Accu-trim
LEG RESTRAINT



Model MR chute (above) is equipped with an 8-inch raised platform.



See <http://comforthoofcare.com/m-series/> for instructional video.

COMFORT CHUTES

E★Series



Model MRE pictured; MSE available



- Efficiently and comfortably handle cattle for trimming and health procedures
- Remote control operates leg restraints and belly band with customized electrical system
- Utilizing the same features of the M-Series and automating Model MS or MR for convenience
- Meeting the needs of various breeds and ages of cattle
- Options: Lead-in Station , Trailer

TRAILERS

Both M-Series and E-Series chutes have the option of coming with a trailer for easy transport from farm to farm.



Comfort Chute Specifications

	Height	Width	Length	Weight	Minimum Working Area	Unloading Width Clearance	Unloading and Working Height Clearance
--	--------	-------	--------	--------	----------------------	---------------------------	--

COMFORT CHUTES H★Series							
Model HS Chute	7 ft / 2.13 m	5 ft / 1.52 m	11.5 ft / 3.50 m	3,450 lbs / 1,565 kg	9 ft x 12 ft / 3 m x 4 m	N/A	N/A
Model HT Chute and Trailer	7 ft 10 in / 2.38 m	7 ft / 2.13 m	15 ft 6 in / 4.72 m	5,580 lbs / 2,530 kg	10 ft x 12 ft / 3 m x 4 m	8 ft / 2.45 m min.	8 ft 6 in / 2.7 m min.

COMFORT CHUTES A★Series							
Model AS Chute	7 ft / 2.13 m	4.25 ft / 1.3 m	11.5 ft / 3.50 m	2,170 lbs / 984 kg	9 ft x 12 ft / 3 m x 4 m	N/A	N/A
Model AT Chute and Trailer	7 ft 10 in / 2.38 m	7 ft / 2.13 m	10.0 ft / 3.05 m	3,300 lbs / 1,497 kg	10 ft x 12 ft / 3 m x 4 m	8 ft / 2.45 m min.	8 ft 6 in / 2.7 m min.

COMFORT CHUTES E★Series							
Model MSE Chute	6 ft 6 in / 1.98 m	42 in / 1.08 m	8 ft / 2.44 m	1,600 lbs / 727 kg	8 ft x 10 ft / 2.5 m x 3 m	N/A	N/A
Model MSE Chute with Lead-in-Station	7 ft / 2.13 m	42 in / 1.08 m	11 ft / 3.39 m	1,800 lbs / 816 kg	8 ft x 12 ft / 2.5 m x 4 m	N/A	N/A
Model MRE Chute	7 ft 2 in / 2.18 m	42 in / 1.08 m	8 ft / 2.44 m	1,800 lbs / 816 kg	8 ft x 10 ft / 2.5 m x 3 m	N/A	N/A
Model MRE Chute with Lead-in-Station	6 ft 10 in / 2.08 m	42 in / 1.08 m	11 ft 6 in / 3.52 m	2,000 lbs / 907 kg	8 ft x 12 ft / 2.5 m x 4 m	N/A	N/A
E-Series Trailer	7 ft 10 in / 2.38 m	7 ft / 2.13 m	12 ft / 3.66 m	400 lbs / 140 kg	N/A	N/A	N/A

COMFORT CHUTES M★Series							
Model MS Chute	6 ft / 1.83 m	42 in / 1.08 m	8 ft / 2.44 m	1,200 lbs / 546 kg	8 ft x 10 ft / 2.5 m x 3 m	N/A	N/A
Model MS Chute with Lead-in-Station	6 ft 6 in / 2.00 m	42 in / 1.08 m	11 ft / 3.39 m	1,400 lbs / 636 kg	8 ft x 12 ft / 2.5 m x 4 m	N/A	N/A
Model MR Chute	6 ft 8 in / 2.00 m	42 in / 1.08 m	8 ft / 2.44 m	1,400 lbs / 636 kg	8 ft x 10 ft / 2.5 m x 3 m	N/A	N/A
Model MR Chute with Lead-in-Station	6 ft 8 in / 2.00 m	42 in / 1.08 m	11 ft 6 in / 3.52 m	1,600 lbs / 727 kg	8 ft x 12 ft / 2.5 m x 4 m	N/A	N/A
M-Series Trailer	7 ft 10 in / 2.38 m	7 ft / 2.13 m	12 ft / 3.66 m	400 lbs / 140 kg	N/A	N/A	N/A



FEATURES & COMPONENTS COMPARISON

	COMFORT CHUTES H★Series	COMFORT CHUTES A★Series	COMFORT CHUTES E★Series	COMFORT CHUTES M★Series
Equipped with our original Accu-trim ® Leg Restraint	YES	YES	YES	YES
May be installed as a stationary chute	YES	YES	YES	YES
May be equipped with wheels for on-farm relocation	YES	YES	YES	YES
May be equipped for transport with our Comfort Chute Trailers	YES	YES	YES	YES
Automatic headgate	YES	YES	YES	YES
Hydraulic headgate	YES			
Pivot style swing tailgate		YES	YES	YES
Hydraulic overhead tailgate	YES			
Belly band to support cattle - manual operation				YES
Belly band to support cattle - electric operation			YES	
Belly band to support cattle - hydraulic operation	YES	YES		
Side gates for loading - manual operation			YES	YES
Side gates for loading - automatic operation		YES		
Side gates for loading - hydraulic operation	YES			
Chute platform raises, adjustable for technician comfort	YES	YES		
Rubber floor for optimal traction	YES	YES	YES	YES
Convenient tool receivers and supply trays	YES	YES	YES	YES
Synchronized controls	YES			
Hydraulic controls	YES	YES		
Electric controls customized to your dairy and country	YES	YES	YES	
Emergency stop controls	YES	YES	YES	N/A
Illuminated work station	YES	YES		
Equipped with lead-in station to improve cow flow	STANDARD	STANDARD	OPTIONAL	OPTIONAL
Accommodates aluminum gates to improve cow flow	YES	YES	YES	YES
Manufactured to accommodate small breeds (Jersey)	YES	YES	YES	YES
Powder coat finish	YES	YES	YES	YES
One year Limited Warranty	YES	YES	YES	YES
Customer support and replacement parts available	YES	YES	YES	YES
Hoof Care training available through Dairyland Hoof Care Institute	YES	YES	YES	YES
Estimated usage level	> 3,000 trims annually > 1,000 herd size	< 3,000 trims annually < 1,000 herd size	< 1,500 trims annually < 500 herd size	< 1,200 trims annually < 400 herd size

Block with Confidence



BOND365[®]

ADHESIVE YOU CAN TRUST ... EVERY DAY

- NEW formulation provides confidence in your blocking
- Simple wood Uni-Bloc application
- Convenient, single application pouch
- Cures quickly — adhered well — cows feel better faster
- Available in 40-application bulk and 10-application kits



Your Choice

B36510 10 application kits

includes 10 Uni-blocs, 10 Uni-toe cups,
10 mixing sticks, toe cup holder

B36540 40 application bulk

Uni-blocs, Uni-toe cups, mixing sticks and toe cup holder sold separately



To be used exclusively with wood Uni-blocs. Use Accu-bond[®] for plastic blocking solutions.

BOND365® Instructions

Step 1



Dispense entire contents of Part A into toe cup.

Step 2



Dispense entire contents of Part B into toe cup.

Step 3



Mix the two parts vigorously with mixing stick for 25 seconds. Bond365® will turn opaque in color.

Step 4



When Bond365® becomes clear, insert block into bottom of toe cup.

Step 5



Apply thin layer to both block and claw. Spread remaining glue on block to ensure $3/16''$ – $1/4''$ (5–7 mm) thickness throughout.

Step 6



Position block on prepared claw. Hold until Bond365® begins to harden. Reposition the block as needed. Allow to cure for four (4) minutes before weight bearing.

*Attend to lesion during curing time.

Video of application process



Block with Confidence



BLOCKING ADHESIVE

- Superb adhesion — glue stacks well
- Allows time to apply blocks properly
- Cures harder and faster with less block shifting
- Longer block retention for fast lesion recovery
- Ideal adhesive for Accu-Bloc® and Accu-Sole®
- 200 ML cartridge — mixing tips and dispensers also available

Accu-Bond®

AB200

Case of 20

Mixing Tips

TP200

Case of 100



Accu-bond® Blocking Kits

Accu-Bloc® 10-Application Blocking Kit

Includes 2 Accu-Bond®, 10 mixing tips, 5 Accu-Bloc® 5.0 in (125 mm) / 5 Accu-Bloc® 5.5 in (140 mm)

ABAB

Case of 10

Accu-Sole® 12-Application Blocking Kit

Includes 2 Accu-Bond®, 12 mixing tips, 12 Accu-Sole® 5.0 in (125 mm) only

ABAS

Case of 12



Accu-Bloc®



- Therapeutic hoof block
- Fits medial or lateral claws
- Optimum width creates stability during recovery
- Height allows for sufficient rest of diseased claw, reducing claw trauma
- Long lasting material ensures original shape and structure
- Easy application with Accu-bond®

ABL50	5 in / 125 mm	Case size: 80
ABL55	5.5 in / 140 mm	Case size: 80

Accu-Sole®



- Therapeutic sole
- Protects thin soles
- Optimum dimensions — claw maintains flat surface
- Long lasting material achieves results
- Easy and trustworthy application with Accu-bond®

ASLE	5 in / 125 mm	Case size: 200
-------------	---------------	----------------

Uni-Bloc



- Long-wearing therapeutic wood block
- Fits both lateral and medial claw
- Various sizes, choose the right block for her needs
- Compatible with Bond365® and Accu-bond®

UB110.18	4.5 x 5/8 in / 110 x 18 mm	Case size: 135
UB110.22	4.5 x 7/8 in / 110 x 22 mm	Case size: 105
UB120.18	5.0 x 5/8 in / 120 x 18 mm	Case size: 135
UB120.22	5.0 x 7/8 in / 120 x 22 mm	Case size: 105
UB130.22	5.25 x 7/8 in / 130 x 22 mm	Case size: 105
UB140.22	5.5 x 7/8 in / 140 x 22 mm	Case size: 105

Uni-Bloc Toe Cup



Adhesive mixing cup used in conjunction with Uni-bloc, the right size and durability for hand-mix glues. Purchase individually or in a case.

UBTC	Case size: 100
-------------	----------------

Adhesive Warming Bag



- Keep Accu-bond® and Bond365® at ideal temperature
- Achieve optimum block retention

WB50	50Hz Adhesive Warming Bag
WB60	60Hz Adhesive Warming Bag

Keep her *Moo-ving*

- Adhesive bandage like no UDDER
- LegenDAIRY fabric — even tear — treat cows fast
- MOOvelous price



Milk it for all it's worth!

- Stretched: 4" x 5 yds (10 cm x 4.5 m)
- Unstretched: 4" x 2.2 yds (10 cm x 2 m)

MWS	MooWrap Singles
MW18	MooWrap – 18-pk
MW100	MooWrap – 100-pk

Join Accu-club!

PRODUCER PREMIUM PROGRAM

Qualify for exclusive producer savings

FREE PRODUCT WITH ACCU-PRODUCT ORDERS OVER US\$500

Your choice:



Uni-bloc UB130.22.C

or



Moo-Wrap® MW100

SUBSCRIPTION DISCOUNT — 5% OFF OF EVERY ACCU-PRODUCT ORDER

- Select products
- Determine delivery frequency
- No supprises! Confirm order via automatic text or email prior to shipment

QUALIFY FOR ALL OTHER ACCU-CLUB BENEFITS

ACCU-CLUB BENEFITS:

- Auto enroll with first US\$500 order of Accu-products
- Qualify for exclusive future promotions
- Spend US\$500 ~ Earn free shipping!
- Auto-ship available! Call or text today — choose items — determine frequency



UNI-BLOC



Add Animal		10296 - 0 - 2/22/21 (3)		Trimmed cows: 01	
101	0	Trim	LF	RF	OK
1074030 (2)	0				
102	0	Lame	LR	RR	OK
472920 (3)	0				
10296	0	Re-Check	All Feet OK		
102920 (3)	0				
10324	0	Trim Rear Feet			
472920 (3)	0				
10344	0				
1074030 (2)	0				
111	0				
10729200 (1)	0				
10296	0				

Basic

- Simple data entry
- Trim history available chute-side
- Cloud-based data transfer to management software
- Clear hoof health analysis
- Licensed for the hoof trimming

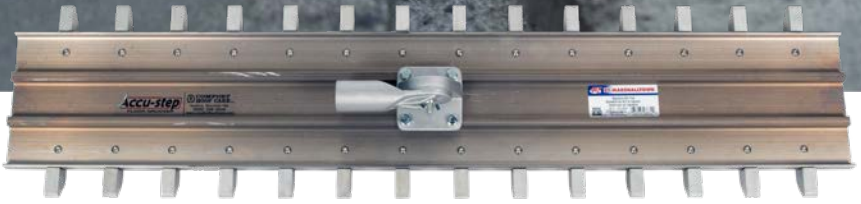
Standard

- Accu-trim Basic with additional features:
 - Automated loading of cow ID numbers
 - Full claw health reports
- Useful tool licensed for the dairy producer

ATHA

Featured on Total Farm Management Software





Accu-step® FLOOR GROOVER

- Install grooves into wet concrete
- Four feet wide — easy to use
- Groove in the direction of cow traffic
- Designed and field tested by lameness experts, Dr. Nigel Cook from the University of Wisconsin School of Veterinary Medicine and The Dairyland Initiative in collaboration with Karl Burgi, hoof trimmer and hoof health consultant from Wisconsin

ASFL



Width .75 in (1.9 cm)
Depth .50 in (1.3 cm)
Spacing 3.25 in on center (8.3 cm on center)

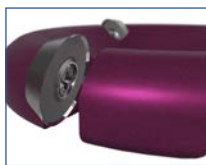


See <http://comforthoofcare.com/accu-step-floor-groover/> for instructional video.

Tools

RotoClip Trimming Disc — Round

RD43	3-blade Disc
RD44	4-blade Disc
INRD	10-piece Round Disc Insert Set
RCLG	10-piece Long Disc Screw Set



RotoClip Trimming Disc — Flat

FL43	3-blade Disc
FL44	4-blade Disc
INFL	10-piece Flat Disc Insert Set
RCSS	10-piece Short Disc Screw Set



Disc Insert — Round



Disc Insert — Flat



Disc Screw — Long



Disc Screw — Short



Power Rasp

PS



Hoof Knives



HK315	#315 Double Edge AESCULAP
HK305	#305 Narrow Edge Left AESCULAP
HK300	#300 Narrow Edge Right AESCULAP
HK321	#321 Wide Edge Left AESCULAP
HK320	#320 Wide Edge Right AESCULAP
RHKR	Therapeutic Edge Right
RHKL	Therapeutic Edge Left

Knife Sharpening Tools

For video, visit <http://comforthoofcare.com/videos/>.

Rubber Sharpening Wheel



R606	6-inch diameter
R706	7-inch diameter

Felt Buffing Wheel

SF	6-inch diameter
-----------	-----------------

Sharpening Compound



JCL



Hoof Nipper

N15



Sharpvet Hoof Tester

SVHT

Supplies

New Weave Gauze

G44 Case size: 20



Biozide Gel

BI20 Case size: 12



Proworks Gloves

PW6 Case size: 10





Vinyl Trimming Apron

TRA



Worknit Gloves

WNM	Medium	Case size: 12
WNL	Large	Case size: 12
WNX	Extra Large	Case size: 12



Cox Dispenser

DS200SL	Side-Load
DS200TL	Top-Load

The **RESOURCE** for flooring solutions



TrakRite TR-330

- Designed for efficient operation so you can get the work done.
 - Smart engineering
 - Easy maneuverability
 - High production
- Patented design allows you to choose the correct drum to do the right job.
 - Quick drum change
 - Follows contour of surface
 - Precise depth control
- Quality workmanship stands up to the rigors of tough environments.
 - Dependable components
 - Simple to operate
 - Easy to maintain

**MAXIMIZE
TRACTION**

**REDUCE
CLAW
WEAR**



**MINIMIZE
LAMENESS**

TrakRite TR-330 Specifications	
Gas powered 37Hp Kohler engine	
Cutting drum width 12 in / 30.5 cm	
Dust supression system	
Dimensions: 42 in x 72 in x 24 in / 196.7 cm x 180.3 cm x 61 cm	
Weight (without drum): 850 lbs / 356.6 kg	

DEEPGROOVE®

- Create safe and secure flooring, cows walk without hesitation
- Achieve groove spacing for optimal hoof function, reduce claw trauma
- Add grooves to new concrete or planed surfaces

Width .75 in (1.9 cm), Depth .50 in (1.3 cm), Spacing 3.25 in on center (8.3 cm on center)



MINIGROOVE® 20

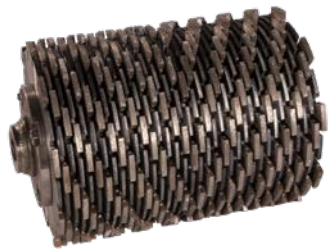
- Provide traction in heifer barns where sand bedding is being used or floor surfaces are wet
- Add groove pattern in areas trafficked by heavy equipment
- Groove depth of 4–6mm



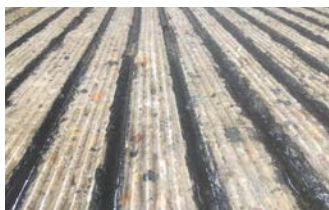
MINIGROOVE® 26

- Utilize between ineffective groove patterns
- Add groove pattern in areas of barn where animals must turn
- Groove depth 2–4mm





- Create a completely flat and stable flooring surface
- Remove concrete on all uneven flooring conditions
- Level exposed aggregate
- Prep floors for Mini Groove® or Deep Groove® cutting
- Achieve results efficiently
- Use hoof health records from MmmmoOgle Accu-trim® to determine your flooring solutions



Drum Accessories

Blade	TC10187/15.40A	10 in / 25.4 cm
Blade	TC10187/15.40B	10 in / 25.4 cm
Blade	TC10250/15.40A	10 in / 25.4 cm
Blade	TC10250/15.40 B	10 in / 25.4 cm
Blade	TC10250/13.40A	10 in / 25.4 cm
Blade	TC10250/13.40B	10 in / 25.4 cm
Spacer	GRSP12	12 ga / 0.32 cm
Spacer	GRSP25	0.25 in / 0.64 cm
Threaded Rod	TR25-G9003	10 mm



GROOVING DRUM FEATURES & SPECIFICATION COMPARISON

APPLICATIONS		4 - GROOVES > 12 - BLADES	20 GROOVES > 20 BLADES	26 GROOVES > 26 BLADES	35 GROOVES > 35 BLADES
Blade requirements to achieve grooving pattern		YES	NO	NO	NO
NEW concrete floors: alleys & crossovers		YES	OPTIONAL - WHERE HEAVY EQUIPMENT IS USED	YES	NO
Reconditioning crossovers		YES	YES	YES	NO
Resurface flat concrete floors per conditions below •					
• Little or no existing grooves		YES	YES	NO	NO
• Narrow grooves // less than .75in / 19mm		OPTIONAL	YES	YES	NO
• Wide spaced groove // greater than 2.50 in / 64mm		NO	YES	YES	NO
• V-groove		NO	NO	YES	OPTIONAL
• Diagonal grooves		NO	NO	YES	OPTIONAL
Resurface cobblestone concrete floors with shallow crown		NO	NO	YES	YES
Resurface cobblestone concrete floors with high crown		YES	NO	NO	YES
Resurface uneven or unstable concrete floors		NO	NO	NO	YES
Resurface flat concrete floors with too many existing grooves		NO	NO	YES	YES
Ineffective grooves (too narrow, too far apart, too shallow)		NO	NO	YES - BETWEEN GROOVES	OPTIONAL
Slatted floors		NO	OPTIONAL	YES	NO
Rough or pitted concrete floors		NO	NO	NO	YES
PRODUCTION / SPECIFICATIONS					
Drum cutting width		12 in / 30.5 cm	12 in / 30.5 cm	12 in / 30.5 cm	12 in / 30.5 cm
Drum weight		89 lbs / 40.4 kg	113 lbs / 51.3 kg	131 lbs / 59.4 kg	148 lb / 67.1 kg
Recommended cutting depth		.50 in / 12.7 mm	.16 in / 4 mm	.12 in / 3 mm	.08 - .12 in / 2-3 mm
Estimated production per assembly, based on blade and cutting depth*					
* Concrete composition and conditions affect production, production will vary					
TC10187/15.40		25,000-40,000 sq ft / 2,323-3,716 sq m			
TC10250/15.40			50,000-65,000 sq ft / 4,645-6,039 sq m	60,000-80,000 sq ft / 5,574-7,432 sq m	65,000-90,000 sq ft / 6,039-8,361 sq m
TC10250/13.40			40,000-55,000 sq ft / 3,716-5,110 sq m	50,000-70,000 sq ft / 4,645-6,039 sq m	55,000-80,000 sq ft / 5,110-7,432 sq m
Estimated production per hour, based on blade and cutting depth*					
* Concrete composition and conditions affect production, production will vary					
TC10187/15.40		500-800 sq ft / 46-74 sq m			
TC10250/15.40			800-1,200 sq ft / 74-111 sq m	DATA NOT AVAILABLE	1,200-2,000 sq ft // 111 - 185 sq m
TC10250/13.40			800-1,200 sq ft // 74-111 sq m	DATA NOT AVAILABLE	1,200-2,000 sq ft // 111 - 185 sq m
BLADE SPECIFICATIONS					
Diameter		10 in / 25.4 cm	TC10187/15.40	TC10250/15.40	TC10250/13.40
Width		10 in / 25.4 cm	10 in / 25.4 cm	10 in / 25.4 cm	10 in / 25.4 cm
Height of diamond segment		.187 in / .475 cm	.187 in / .475 cm	.250 in / .635 cm	.187 in / .475 cm
Application		59 in / 15 mm	59 in / 15 mm	59 in / 15 mm	51 in / 13 mm
		DEEP GROOVE* ONLY	MINI GROOVE* & PLANING	MINI GROOVE* & PLANING	MINI GROOVE* & PLANING

The **RESOURCE** for hoof health consulting services

www.SureStepConsulting.co



As caretakers of dairy cattle, we have a responsibility to do everything in our power to improve hoof health, maintain productivity and keep cows in the herd as long as possible.

Our in-depth understanding of lameness' causes and effects allow us to develop innovative practices based on field evidence. Our personal passion and business mission is to SAVE COWS®.

CONSULTATION:

We investigate lameness from the cow's perspective, focusing on the dynamics that influence hoof health.

EDUCATION:

Offering in person and virtual opportunities, we provide cutting edge information covering all aspects of hoof health.

COLLABORATION:

Our practical approach provides staff and consultants with the skills to discuss lameness issues with their clients and customers.



Karl Burgi

As a global leader in hoof health, Karl Burgi serves the dairy industry through:

- The design, testing and development of innovative hoof trimming equipment – Comfort Chutes & Trakrite® TR-330.
- Education of trimmers, veterinarians, herd managers and dairy consultants on all aspects of hoof care and lameness prevention at the Dairyland Hoof Care Institute.
- Networking with international experts, researching hoof health and supporting modern dairy farms through Sure Step Consulting International LLC.
- Partnering with other dairy enthusiasts who share the same passion to SAVE COWS®.



The **RESOURCE** for hoof health education



Since 1995, setting the bar for excellence in hoof health education



Technical Hoof Trimming Course:

Obtain a complete understanding of hoof health and become proficient at hoof trimming in this comprehensive, four day technical course. You will receive individualized training in the classroom, at the lab and on the farm, covering all aspects of hoof health assessment, functional hoof trimming, corrective hoof trimming procedures and so much more.

2022 SCHEDULE:

- March 28–31, 2022
- May 16–19, 2022 SPANISH
- August 15–18, 2022
- October 17–20, 2022

Consultant Hoof Health Summit

Tailored to the needs of dairy industry consultants and veterinarians. Our Consultant Hoof Health Summit provides pertinent hoof health information to attendees, giving them the tools to remain valuable members of the farm management team. Collaborate with industry experts gather new information assist clients in making management decisions.



On-Farm Hoof Care Coaching

Take control of hoof health — take care of your cows. Work with industry experts to develop a hoof health protocol and achieve results through staff training. Training topics include: basic lower leg anatomy, disease identification, functional trimming procedures, therapeutic trimming procedures, treatment protocol, tool and supply recommendation and an on farm consultation by a Dairyland instructor. We look forward to implementing an action plan for success on your dairy.

Phase One: Initial Coaching Workshop

Format: Three day minimum workshop includes theory portion along with functional and therapeutic trimming session.

Phase Two: Three To Six Months After Initial Workshop

Format: One day functional and therapeutic hoof trimming follow up session

Phase Three: Nine To Twelve Months After Initial Workshop

Format: One day functional and therapeutic hoof trimming follow up session.



Staff Training
Average Return
on Investment =
US\$0.59
per cow, per day

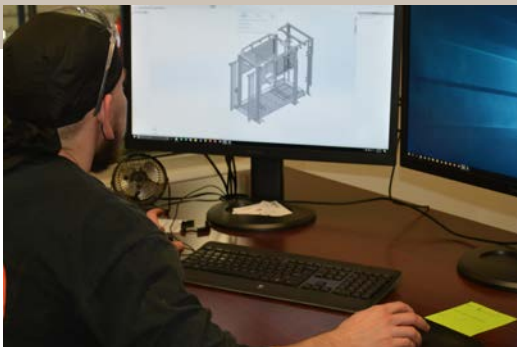


Teaching an **INTEGRATED** approach
to hoof health

The **RESOURCE** for manufacturing services



From Design to Manufacturing to Delivery



Design

Combining your ideas with our expertise, we guide you through design and development. New or advanced, unique or simple, your vision can become a reality.



Manufacturing & Fabrication

Precision, quality and efficiency are the hallmarks of our processes. Through modern technology and organized workflow, we ensure projects are completed timely, accurately and in the most cost-effective manner possible.

Coating services

Your fabricated designs deserve a top quality, durable finish that will stand the test of time. Invest in a powder coat finish, produced by a local expert with an eye for details.



Assembly

All products are assembled, tested and inspected to your high standards. From choosing components to prepping for international installations, we implement safeguards for end users.



Distribution – Exporting

Bringing decades of domestic shipping and international exporting experience, we package your goods, assist with required documentation and arrange transport for an on-time delivery.



Save Cows® Executive Team



Karl Burgi, Founder and Board Chairman
KBurgi @SaveCows.com

As caretakers of dairy cattle, I believe we must do everything in our power to implement best-known management practices. Hoof health is literally the foundation of animal well-being which translates into high quality products available to consumers around the globe. It is through my collaboration with dairy industry professionals and international researchers that I offer practical solutions to the dairy management team. Each day when I arrive at a dairy, I strive to make a difference. My personal passion and business mission is to Save Cows®.



Melanie Burgi, Chief Executive Officer
MBurgi @SaveCows.com

Growing up on a Brown Swiss dairy farm in the hills of Wisconsin, I learned first-hand the importance of raising healthy calves and keeping cows productive. Through our company's work, we create a ripple of information and technology that empowers people who are directly responsible for the health of dairy cattle. This results in quality food placed in school cafeterias, at restaurants and on family tables.



Kimberly Evert, Director of Business Development and Administration
KEvert@SaveCows.com

In the spirit of supporting our business mission to Save Cows®, I have the unique opportunity to promote hoof health and animal well-being on a global scale. Our international network allows us to enhance the life and productivity of dairy cows by making education and technology available to producers in over 75 countries. Every day I look forward to collaborating with the industry's best, helping them achieve their hoof health goals and, in turn, continually raising the hoof care standard of excellence.



Poncho Showers, Director of Manufacturing and Operations
PShowers@SaveCows.com

We embrace the responsibility of being the industry leader in hoof health by providing innovative equipment focused on promoting animal well being. Our Comfort Chutes ensure cattle are cared for safely while easing the work for technicians through an ergonomically designed workstation. The Trakrite® TR 330 provides safe flooring so cows can walk confidently on today's modern dairy farm. All equipment stands the test of time through quality workmanship and long lasting components. It brings me great joy to share our business mission and see the impact it has on dairy producers globally.



SaveCows[®].com

Dedicated to Animal Well-Being. Fostering Hoof Health.

420 Commerce Avenue
Baraboo, Wisconsin 53913
U.S.A.
info@SaveCows.com

Tel: 608.356.3834
888.384.3834
Fax: 608.356.6112
Text/WhatsApp: 608.477.9811

**We look forward to helping you achieve
your hoof health goals.**

